

Network Relay controller for Bell, Horns and Buzzers

QUICK START GUIDE

LOADING SOFTWARE



LOAD SOFTWARE CD INTO DRIVE AND FOLLOW THESE STEPS:

- 2** CLICK ON MY COMPUTER > CLICK CD DRIVE > CLICK SETUP >
OPEN > OK > FOLLOW INSTUCTIONS STEPS > FINISH > →

THE INNOVATION WIRELESS ICON WILL LOAD ONTO YOUR DESKTOP

- 3** YOU MAY NOW REMOVE CD FROM DRIVE

- 4** DOUBLE CLICK THE ICON TO OPEN YOUR SCHEDULING PROGRAM > → 

Network Relay controller for Bell, Horns and Buzzers

1

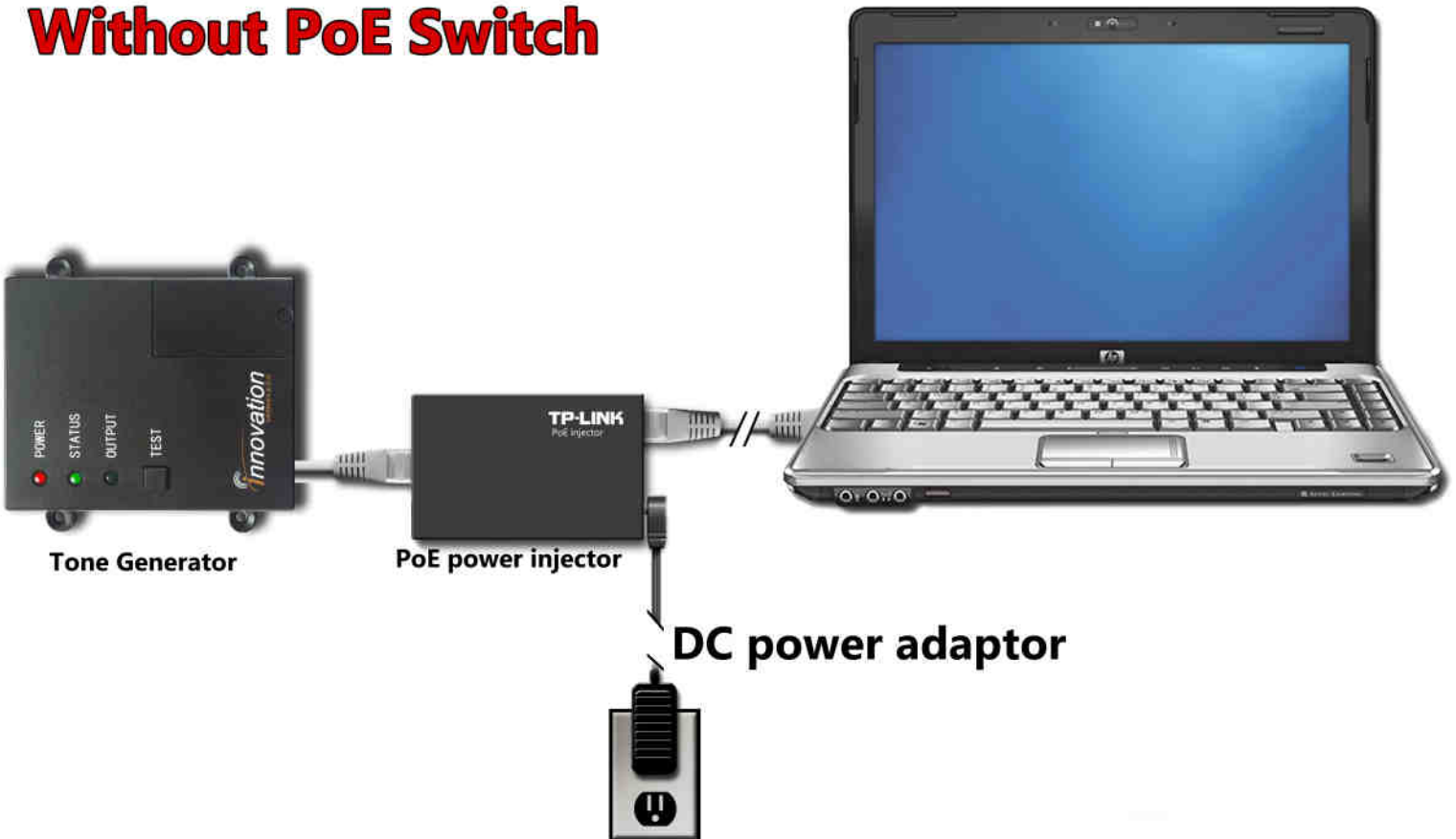
QUICK START GUIDE

Hardware setup

With PoE Switch



Without PoE Switch



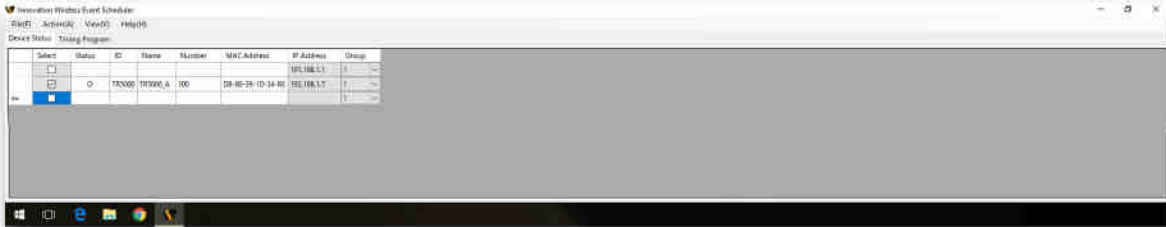
Network Relay controller for Bell, Horns and Buzzers

2

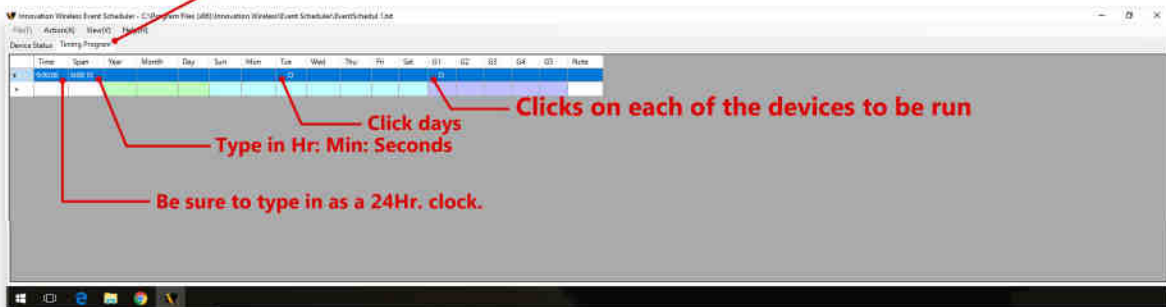
QUICK START GUIDE

Software setup

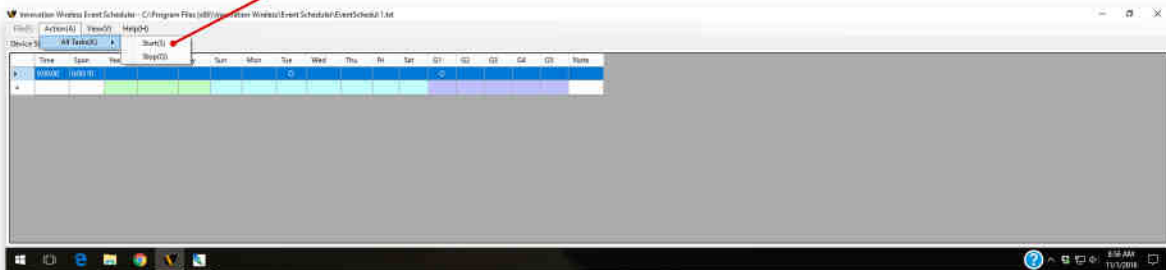
1. Once opened, event scheduler will recognise devices.



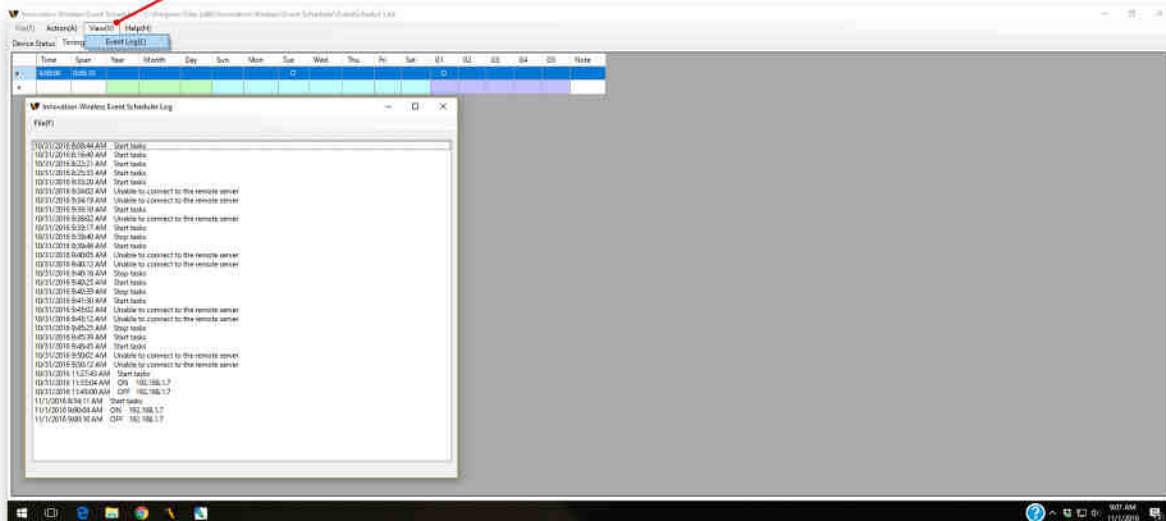
2. Click tab to program devices



3. Once all are programmed, click Start.



Click view/event log if you would like to review.



Network Relay controller for Bell, Horns and Buzzers

QUICK START GUIDE

TO SET UP YOUR RELAY

(FOR YOUR DEFAULT ALARM)

A. SUPPLY INPUT POWER TO BELLS OR HORNS.
PLEASE CHECK ON BELL OR HORN FOR NECESSARY INPUT REQUIREMENTS.
TONE GENERATOR WILL OUTPUT ONLY NORMAL OPEN OR NORMAL CLOSE
RELAY OUTPUT, AND WILL NOT FEED NECESSARY POWER TO DRIVE BELLS OR HORNS.

