

1

QUICK START GUIDE

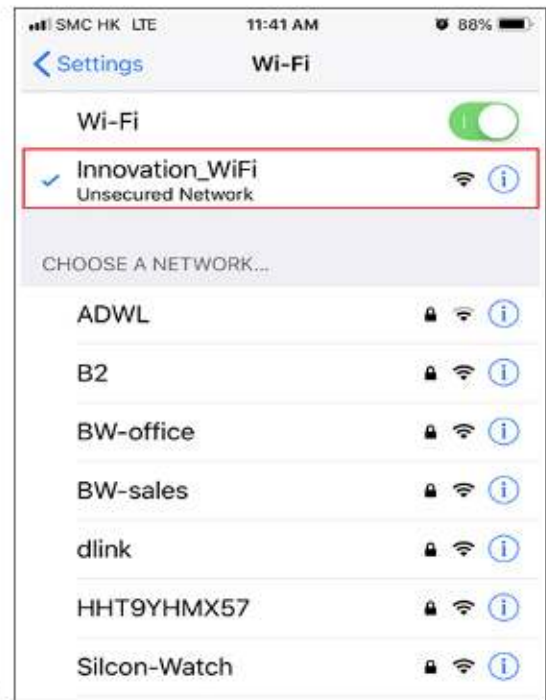
Step 1:

If you are setting up POE clocks, please connect clocks with your POE switch, and skip to step 5. (you can double click on the IP address of the clock in the list and go to the webpage of the POE clock.

Password is 7369

For WiFi clock:

If you are setting up an analog clock, install batteries. If setting up an LED clock, connect the AC adapter with the 120AC power outlet. The clock will become WiFi spot. Go to the network and internet setting of your PC and select Innovation_WiFi SSID and join WiFi.



2

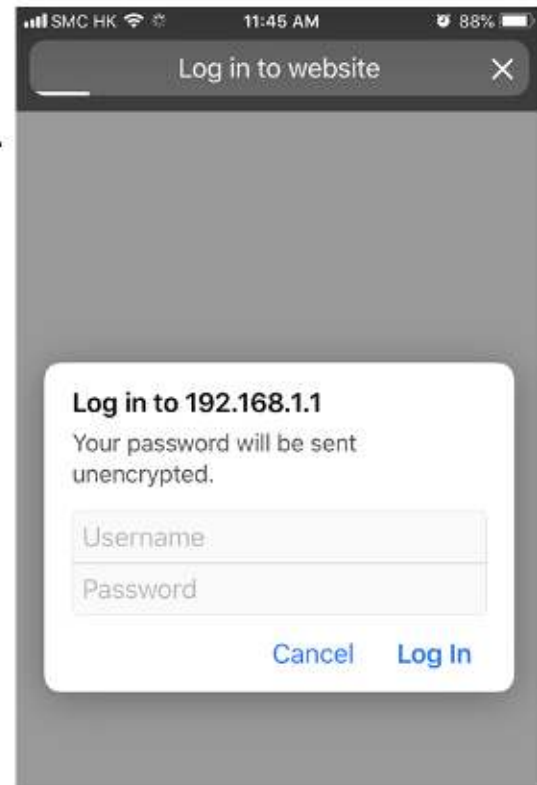
QUICK START GUIDE

Step 2:

Go to your internet explorer and type 192.168.1.1 to log into clock web setting page.

User: admin

Password: innovation



Step 3:

In clock Setting, select the city, then "Submit"



3

QUICK START GUIDE

Step 4: Network Setting

- Wifi Mode : Select STA normal mode. (AP is the routing mode)
- Security Type : Select WPA2
- SSID : input your wifi SSID
- Password: input your wifi password
- Press "Submit"
- Within a few minutes, the clock should join with your WiFi and sync to the correct time.

Step 5:

If you need to monitor clocks using IW IP clock monitor program, please copy program file from CD to your Windows PC and double click on IP clock monitor application. (admin for both user name and password)

Data: ON-LINE / OFF LINE, CLOCK NAME/LOC, MAC Address, IP ADDRESS will be shown in main page

IV IP Clock Monitor V0.5.4

File(F) Tools(T) Setting(S)

ID	Status	Clock Type	Name	MacAddress	IP Address	City	Last Update	Sync Time	Count down	Messages	Battery Level
1	Online	6Digitals	WF-IP-CLOCKWhite	1C-34-77-00-0F-77	10.0.100.38	BOSTON	2018-06-12 17:53:45	2018-06-12 17:53:45			3.2
2	Online	6Digitals	WF-IP-CLOCKRed	1C-34-77-00-0F-76	10.0.100.23	DENVER	2018-06-12 10:48:25	2018-06-12 10:48:25			3.3
3											
4											
5											
6											
7											
8											
9											
10											
11											
12											
13											
14											
15											
16											
17											
18											

4

QUICK START GUIDE

Step 6:

If you need to update firmware on clock.

Password: admin

- ID: 1
- Browse the update file (.bin file)
- Press "update"

The screenshot shows the IP Clock Monitor V 0.5.4 software interface. The main window displays a table of running clocks. A dialog box titled "IP Clock Update" is open, showing the following fields:

- PassWord: [Empty]
- ID: 1 (selected in a dropdown menu)
- IP: 10.0.100.23
- MAC: 1C-34-77-00-0F-76
- NAME: WF-IP CLOCKred
- OffsetAddress: 00
- File: OpenFileDialog1

Buttons for "Browse" and "Update" are visible on the right side of the dialog box.

ID	Status	Clock Type	Name	MacAddress	IP Address	City	Last Update	Sync Time	Count down	Messages	Battery Level
1	Online	6Digitals	WF-IP CLOCKred	1C-34-77-00-0F-76	10.0.100.23	DENVER	2018-06-13 05:04:57	2018-06-13 05:04:57			3.3
2	Online	6Digitals	WF-IP CLOCK	1C-34-77-00-0F-77	10.0.100.38	DENVER	2018-06-13 05:32:52	2018-06-13 05:32:52			3.2

Step 7:

If you need to change NTP servers.

The screenshot shows the IP Clock Monitor V 0.5.4 software interface. The main window displays a table of running clocks. A dialog box titled "Time Servers Setting" is open, showing the following fields:

- Retry Server After: 12
- Updates: [Checked]
- Rotate Servers: [Checked]
- 1st Server Address: time.nist.gov
- 2nd Server Address: time.windows.com
- 3rd Server Address: mx.pool.ntp.org
- 4th Server Address: ft.pool.ntp.org
- 5th Server Address: de.pool.ntp.org
- 6th Server Address: uk.pool.ntp.org
- 7th Server Address: jp.pool.ntp.org
- 8th Server Address: au.pool.ntp.org
- 9th Server Address: tw.pool.ntp.org
- Local Time Server: OFF
- Local Timer Server IP: 192.168.0.9

A "Submit" button is visible at the bottom of the dialog box. Below the dialog box, there is a table with columns: Choose, ID, Status, Clock Type, Name, MacAddress, IPAddress.

Choose	ID	Status	Clock Type	Name	MacAddress	IPAddress
<input checked="" type="checkbox"/>	1		6Digitals	WF-IP CLOCK...	1C-34-77-00-0...	10.0.100.23
<input type="checkbox"/>	2		6Digitals	WF-IP CLOCK...	1C-34-77-00-0...	10.0.100.38

5

QUICK START GUIDE

Step 8:

If you need to change login password of the clock.

IP Clock Monitor V 0.5.4

File(F) Tools(T) Setting(S)

- Edit user information
- Terminal IP Setting
- Email Alerts

Innovation Wireless Digital Clock

ID	Status	Clock Type	Name	Mac Address	IP Address	City	Last Update	Sync Time	Count down	Messages	Battery Level
1	Online	6Digitals	WF-IP CLOCKred	1C-34-77-00-0F-76	10.0.100.23	DENVER	2018-06-13 05:35:23	2018-06-13 05:35:24			3.3
2	Online	6Digitals	WF-IP CLOCK	1C-34-77-00-0F-77	10.0.100.38	DENVER	2018-06-13 05:40:32	2018-06-13 05:40:32			3.2
3											
4											
5											
6											
7											
8											
9											
10											
11											
12											
13											
14											
15											

Modify user information

Old user name:

Old Password:

New User Name:

New Password:

Confirm Password:

Save Cancel

Step 9:

If you need to fix IP addresses with the clock.

File(F) Tools(T) Setting(S)

- Edit user information
- Terminal IP Setting
- Email Alerts

Innovation Wireless Digital Clock

ID	Status	Clock Type	Name	Mac Address	IP Address	City	Last Update	Sync Time	Count down	Messages	Battery Level
1	Online	6Digitals	WF-IP CLOCKred	1C-34-77-00-0F-76	10.0.100.23	DENVER	2018-06-13 05:35:23	2018-06-13 05:35:24			3.3
2	Online	6Digitals	WF-IP CLOCK	1C-34-77-00-0F-77	10.0.100.38	DENVER	2018-06-13 05:42:44	2018-06-13 05:40:32			3.2
3											
4											
5											
6											
7											
8											
9											
10											
11											
12											
13											
14											
15											
16											
17											
18											
19											
20											

Terminal IP Setting

Warning! IP terminal to be set must to use the interconnection lines!

Note
Not to the number of terminals on the network using the tools, otherwise, all terminals will make the same IP addresses.

Terminal information

Password:

MAC Address: FF FF FF FF FF FF

Target IP: 10 0 100 188

Gateway IP: 10 0 0 1

SubMask: 255 255 0 0

DHCP ENABLE:

Send



QUICK START GUIDE

PASSWORD:admin

MAC Address: All Enter "FF" (if it is FF-FF-FF-FF-FF-FF, this means for all Mac address. Only 1 clock can connect to the switch)

Input Target IP

Gateway IP: Auto run according to the PC

Submask: Auto run according to the PC

DHCP ENABLE:

Press: SEND (setting finished.)

Step 10:

If you want to use email alerts in case clock goes offline.

IP Clock Monitor V 0.4.2

File(F) Tools(T) Setting(S)

Edit user information
Terminal IP Setting
Email Alerts

IP Clock Monitor

ID	Status	Clock Type	Name	MacAddress	IP Address	City	Last Update	Sync Time	Count down	Messages
1	Online	Digital	IP CLOCK	1C-34-77-00-00-00	10.0.100.37	DENVER	2018-04-16 18:20:15	2018-04-16 18:20:18		
2										
3										
4										
5										
6										
7										
8										
9										
10										
11										
12										
13										
14										
15										
16										
17										
18										
19										
20										

2018-Apr-16
18:20:35

Email Alerts

Email Alert Configuration

Send E-mail settings

1 Sender Email: 13691811958@139.com
2 Email Password: *****
3 Email Server: smtp.10095.on

Receive E-mail settings

4 Email Recipient: 13691811958@139.com

5 Submit

Send Email Alerts: OFF

Send Email Alerts OFF

Ntp Synchronization Timeout: after 1 minutes

Time Sync Change: greater than 101 seconds

Restart:

Count Up Activated:

Count Down Activated:

Clock Offline: greater than 0 seconds

IP Clock Monitor V 0.4.2

File(F) Tools(T) Setting(S)

Edit user information
Terminal IP Setting
Email Alerts

IP Clock Monitor

ID	Status	Clock Type	Name	MacAddress	IP Address	City	Last Update	Sync Time	Count down	Messages	Battery Level
1	Online	Digital	WF-IP CLOCK	1C-34-77-00-0F-76	10.0.100.23	DENVER	2018-06-13 05:35:23	2018-06-13 05:35:24			3.3
2	Online	Digital	WF-IP CLOCK	1C-34-77-00-0F-77	10.0.100.38	DENVER	2018-06-13 05:45:49	2018-06-13 05:43:07			3.2
3											
4											
5											
6											
7											
8											
9											
10											
11											
12											
13											
14											
15											
16											
17											
18											
19											
20											

2018-Apr-16
18:20:35

Email Alerts

Email Alert Configuration

Send E-mail settings

Sender Email: goplay@163.com
Email Password: *****
Email Server: smtp.163.com

Receive E-mail settings

Email Recipient: goplay@163.com
Email Time: 13 : 24

Submit

Send Email Alerts: ON

Send Email Alerts ON

Ntp Synchronization Timeout: after 1 minutes

Time Sync Change: greater than 101 seconds

Restart:

Count Up Activated:

Count Down Activated:

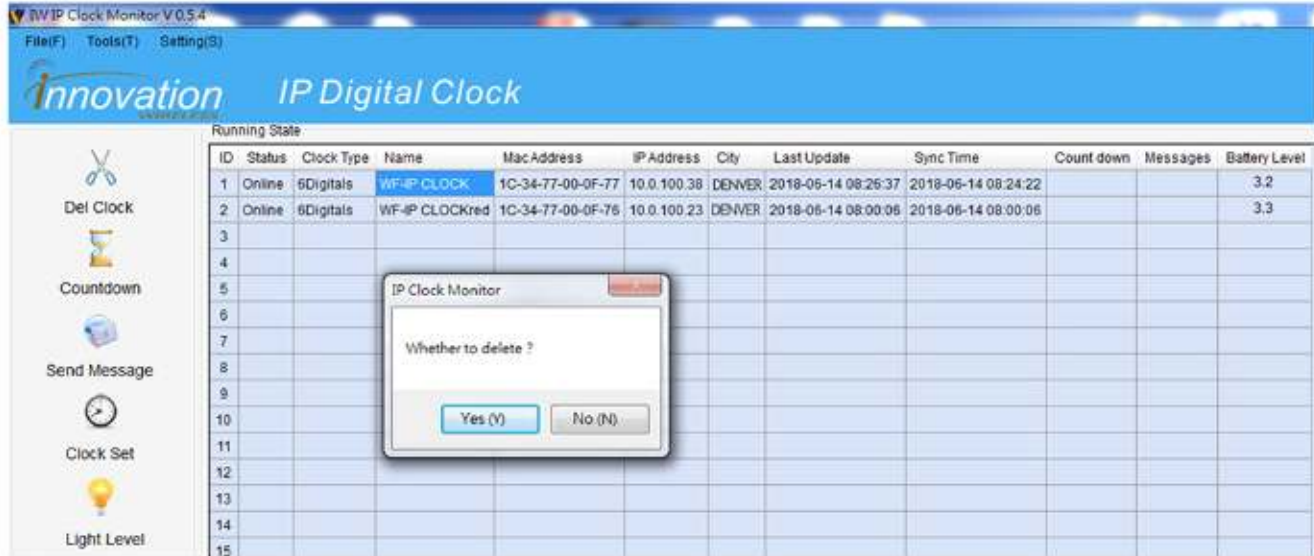
Clock Offline: greater than 10 seconds

7

QUICK START GUIDE

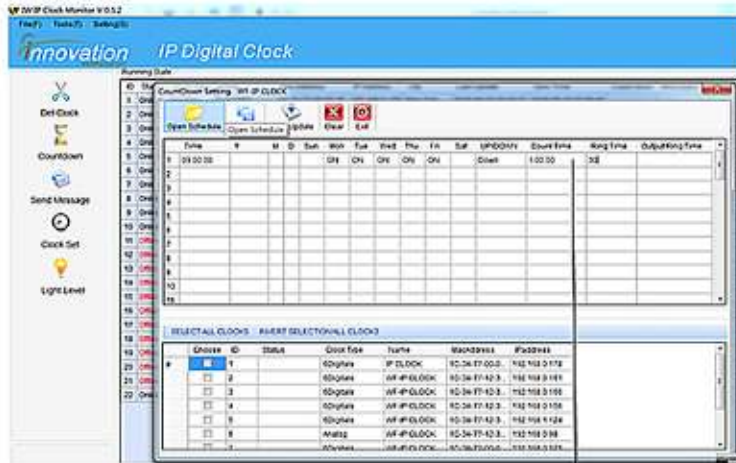
Step 11:

If you want to delete clock from list.



Step 12:

How to set up the count-up or count-down with LED clocks (Analog clock does not have count up/down)



Count Time Setting

Then it will display the Countdowns setting.

What you need to do is to press the cell and input what you need.

Time: Input the time you need.(00:00:00)

Y=Year: Input the Year that you need

M=Month: Input the Month that you need

D=Date: Input the Date that you need.

If you input the above data, it will alarm at what you input.


Day of Week:

If you press ON on Day of Week from Sunday to Sat. Then, it will alarm at the time that you input everyday based on day of week that you turn on.

UP/DOWN

You can select to count up or count down

00:00:00 - 24:59:59(MAX)

After finished the setting, click 



QUICK START GUIDE

Reminder:

Make sure to clear the old countdown setting, and please press "Save Update" too. Then NEW countdown setting can be created.



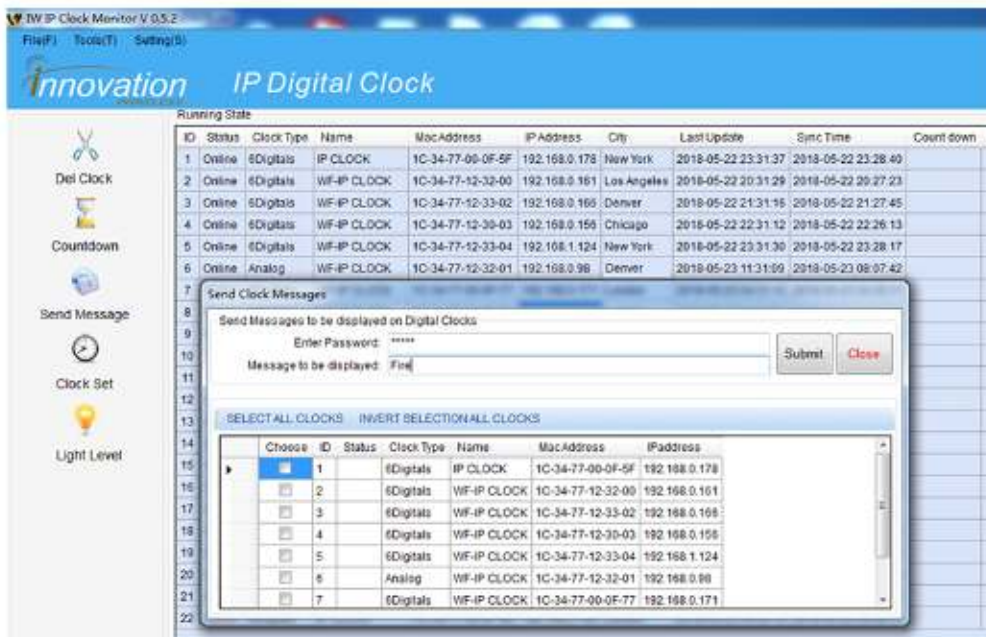
When we set **Time:17:00:00** and **Count Time:02:00:00**. When actual time reach 5:00:00 P.M.

This play will change to 02:00:00 and depends on UP or Down is selected. When it 00:00:00, the alarm will sound.

When **Time is set at 17:00:00** and **Count Time at 00:00:00** When the actual time reaches 5:00:00 P.M. The alarm will sound.

Send Message

The current system has 4 digits / alphabets to display, example: Fire/ Bell/ good



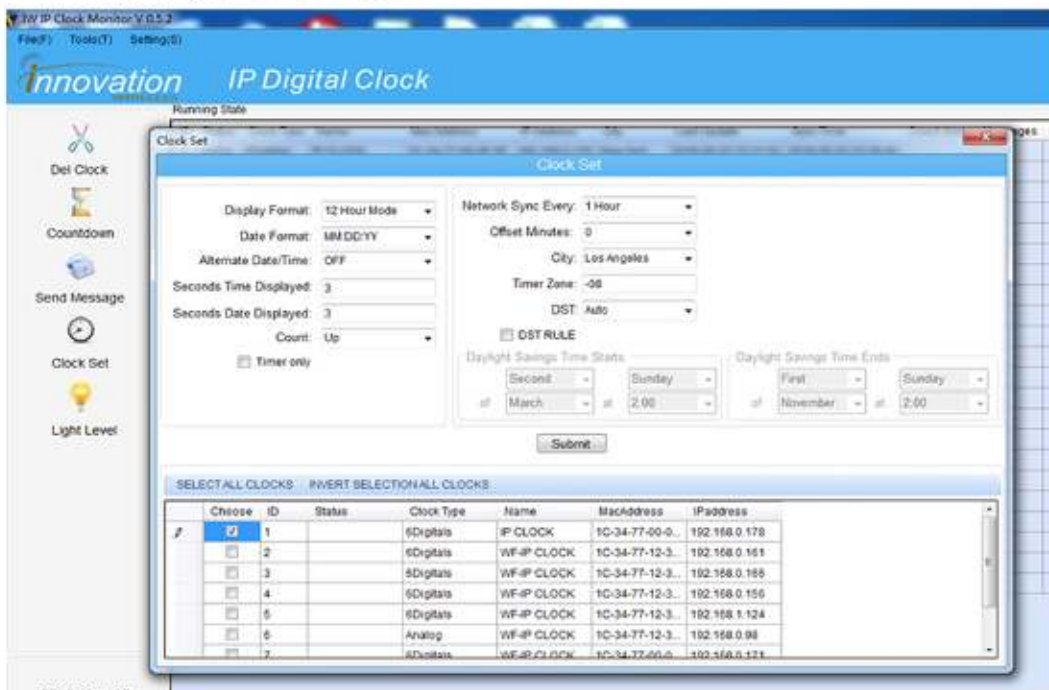
Message display should be:



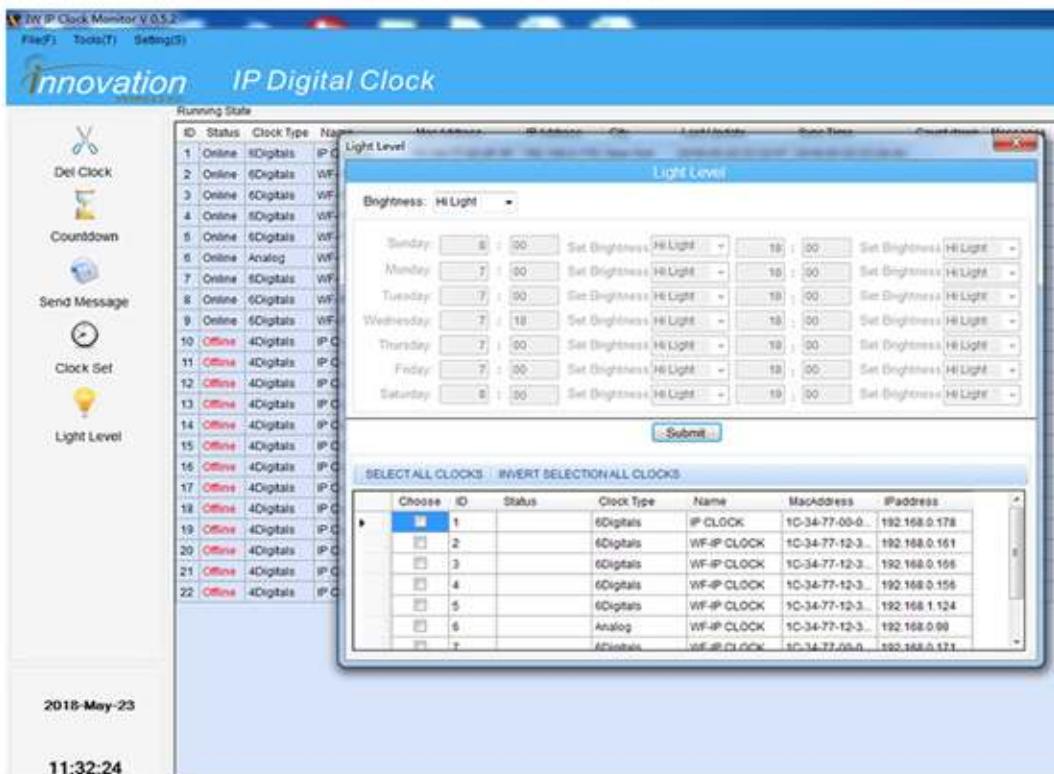


QUICK START GUIDE

Step 13:
To change clock settings.



Step 14:
To change light level (only with LED clocks)



10

QUICK START GUIDE

Trouble Shooting:

- For clocks to join your WiFi or Network at initial setting, your network must support DHCP for clock to receive IP from your network router. If your network does not have access to outside NTP servers, or if your network has a Firewall, or other security setting to prevent clocks from joining your network or join NTP servers, your clock will not be able to join network, or sync to the correct time. Please consult with your IT department if this is the case.
- If you have a problem listing up clocks with IW clock monitor program, please check the Firewall setting of your PC. If your network has other security settings to prevent communication between your PC and clocks, you might not see the clock listed. Please consult with your IT department.

